



The 1250 PRO Tracked Carrier from ACONDA is the ultimate all-purpose carrier, designed to handle a wide range of tasks with ease.

With a compact width of just 750mm, the 1250 PRO Tracked carrier can fit through most doorways, making it incredibly versatile. Despite the narrow profile, this model offers an impressive maximum capacity of 1,250kg, providing exceptional strength and versatility for various applications, ensuring the 1250 PRO Tracked carrier can tackle a wide array of jobs with ease and efficiency.

All PRO models are designed to be as low as possible for excellent stability, and come with enhanced features including gradient monitoring, remote information feedback, and a smart auxiliary output, allowing control of powered accessories and increasing safety in critical situations.

FEATURES

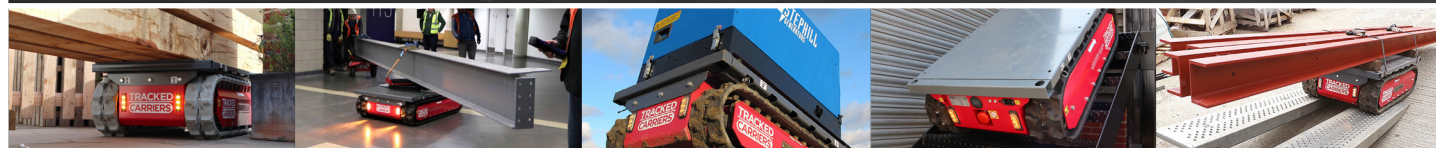
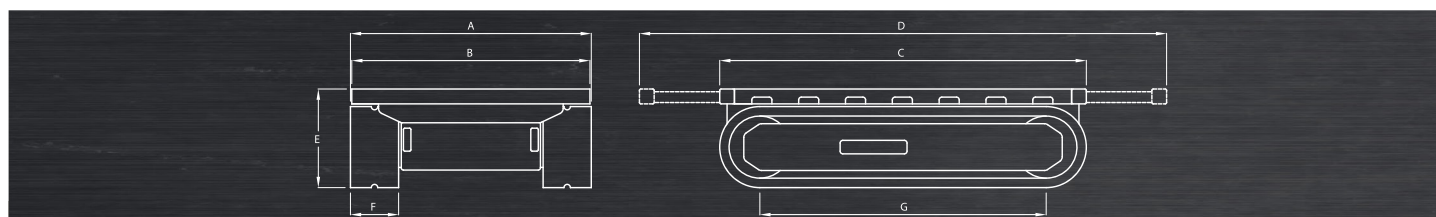
- Efficient direct AC electric drive ●
- Fully proportional remote control ●
- Maintenance free AGM batteries ●
- Hazard lights front and rear ●
- Switchable motion alarm ●
- On board diagnostics ●
- Adaptable and extendable platform ●
- LCD information screen on remote control ●
- Smart auxiliary output socket ●
- Automatic gradient/speed monitoring ●
- Non-marking tracks ●
- Wide range of accessories ●

● = Optional ● = As Standard

CAPACITIES	Max capacity on level ground	1250kg
	Max capacity at max gradient	300kg
	Max gradient	45°
	Max side slope	30°
	Max speed	3km/h
	Unladen weight	340kg

POWER	Power (max)	2.4kW
	Voltage	24V
	Battery capacity	125Ah
	Charger input	110V-230V

DIMENSIONS	Width overall (A)	750mm
	Width of bed (B)	740mm
	Length of bed/overall (C)	1120mm
	Length extended (D)	1700mm
	Height (E)	360mm
	Track width (F)	150mm
	Track length on ground (G)	800mm
	Ground clearance (centre)	60mm



Contact Us: Aconda, Unit 16, Crittall Road, Witham, Essex, CM8 3DR, UK
Telephone: +44 (0)1621 810999 **E-mail:** info@aconda.com **Web:** www.aconda.com